

# Flight Analysis Report



Aircraft	: Cessna Skyhawk G1000 Asobo . . .	Airline	: CJV
Tail Number	: FsQC	Flight Number	: 5611
Airport ICAO Departure	: LOWZ - Zel I Am See	Airport ICAO Destination	: LOWI - Innsbruck
Date and Time	: 2023-03-24 - 19: 18	Distance Destination Airport	: 59 Nm. 110 Km.
FS Date and Time	: 2023-03-24 - 16: 01	Cruise Altitude Flightplan	: 8,000 Ft. 2,438 M.
Loaded Flight	: CustomFlight		
Loaded Flightplan	: CUSTOMFLIGHT.PLN		

## Departure



Engine Started at	: 15 : 09 : 57	Gate	: 5
Taxi Out at	: 15 : 13 : 10		
Wind at Runway	: 020° 2 Knt. 11 °C		
Flaps at Takeoff	: No Flaps Set		
TakeOff Thrust Set at	: 15 : 17 : 03	Thrust	: 100 %
Start Rolling at	: 15 : 17 : 03	Runway	: 26
Airborn at	: 15 : 17 : 27 - 59 Knt. 109 km.		
TakeOff Weight	: 2,214 lbs. 1,004 kg.		
TakeOff Roll	: 469 M. 1,540 Ft.		
Landing Gear Up at	: Fixed		
Flaps Up at	: No Flaps Set at TakeOff		
Auto Pilot On at	: 15 : 18 : 08 - 410 Ft. 80 Knt.		
Auto Speed Hold On at	: .....		

## Climb, Cruise & Descent



Cruise Alt and Course	: 8,000 Ft. - 268° - 266°
Avg. Wind at Cruise	: 261° - 006 Knt.
Avg. Track at Cruise	: 268° Hdg - 266° Trk
Climb Duration	: 8 Min.
Cruise Duration	: 23 Min.
Descent Duration	: 8 Min.
Avg. Gsp at Climb	: 87 Knt. 161 Km.
Avg. Gsp at Cruise	: 108 Knt. 200 Km.
Avg. Gsp at Descent	: 99 Knt. 183 Km.
Cruise Alt Reach at	: 15 : 25 - 11 Nm. 0 °C
Start Descent at	: 15 : 48 - 13 Nm. 0 °C
No Leveling	: CDA

## Approach

Flaps 1	: 10° at: 4,518 Ft. 101 Knt.
Flaps 2	: 20° at: 3,400 Ft. 88 Knt.
Flaps 3	: 30° at: 3,186 Ft. 81 Knt.
Flaps 4	: -
Auto Pilot Off at	: 682 Ft. - 68 Knt.
Auto Speed Hold Off at	: ---
Landing Gear Down at	: Fixed
At 10,000 Ft	: 0 Knt. Vs : 0 Ft/m
At 5,000 Ft	: 0 Knt. Vs : 0 Ft/m
At 2,500 Ft	: 96 Knt. Vs : -701 Ft/m
At 1,000 Ft	: 72 Knt. Vs : -533 Ft/m

Pitch :	Hdg :	Crs :	Wind :	Distance to TD :
.....	000°	000°	000° 0 Knt.	0 Nm.
.....	000°	000°	000° 0 Knt.	0 Nm.
-4.1°	261°	255°	010° 9 Knt.	6 Nm.
-2.3°	258°	254°	343° 4 Knt.	3 Nm.

## Landing

Flaps	: 30°
At 500 Ft	: 65 Knt. Vs : -608 Ft/m
At 300 Ft	: 68 Knt. Vs : -518 Ft/m
At 100 Ft	: 64 Knt. Vs : -603 Ft/m
At 50 Ft	: 61 Knt. Vs : -634 Ft/m
Idle at	: on the runway - 25 Knt.
Landing Speed	: 49 Knt. 93 Km. IAS

Pitch :	Hdg :	Crs :	Wind :	Distance to TD :
-1.4°	259°	254°	337° 5 Knt.	1.15 Nm.
-1.1°	263°	258°	353° 4 Knt.	0.69 Nm.
-1.3°	262°	257°	330° 4 Knt.	0.25 Nm.
-0.7°	263°	258°	331° 5 Knt.	0.16 Nm.
5.0°	263°	258°	330° 4 Knt.	
5.1°	263°	258°	330° 4 Knt.	

## On The Runway

Wind at 50 Ft.



Vertical Speed at TD	: -96 Ft/m 2 Ft. off CenterLine
G-force at TD	: 1.09 Pitch: 5.1° Bounci ng:
Bank and Gear at TD	: 0.7° - Both No
Nose Down at	: 54 GS. 52 M. 1.86 s.
Landing Weight	: 2,180 lbs. 989 kg.
Reverser Set at	: not set
Reverser Cancelled at	: reverser not used
Spoilers Armed	: No
Spoilers Deployed at	: No
Flaps	: 30°
Toe Brakes at	: 41 Knt. GS.
Landing Roll	: 373 M. 1,224 Ft. 16 ft. 16.5 s.
Flaps Up at	: 4 minuts after Touchdown.
Spoilers Retracted at	: Spoilers not Deployed
Runway Cleared at	: 15 : 57 : 35 83 s.
Engine Shut Down at	: 16 : 01 : 12 Gate : 12 Ramp

## Fuel Consumption

Taxi Out	: 0.1 Gal . i n:	4 Mi n.	0.3 Nm.
Climb	: 1.3 Gal . i n:	8 Mi n.	12 Nm.
Cruise	: 2.6 Gal . i n:	23 Mi n.	41 Nm.
Descent	: 0.3 Gal . i n:	8 Mi n.	12 Nm.
Taxi In	: 0.0 Gal . i n:	5 Mi n.	1.2 Nm.
TOTAL	: 4.4 Gal . i n:	48 Mi n.	67 Nm.
Remaining	: 22 Gal . and	172 Mi n.	289 Nm.

## Forces & Controls

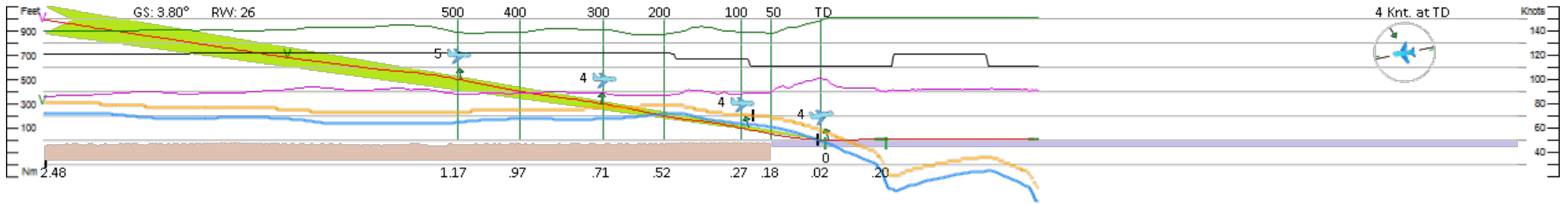
Max. Bank	: 27.2° at: 7,307 Ft. 74 Knt.
Max. Pitch Up	: 13.3° Max. Vs : 1,396 Ft/m.
Max. Pitch Dn	: 5.9° Min. Vs : -1,390 Ft/m.
Max. AOA	: 3.2 - 59 Knt. - AGL: 3 Ft.
Max. G-Force	: 1.29 G
....	
Min. G-Force	: 0.81 G - 41 Nm. from TakeOff.
....	

## Schedule

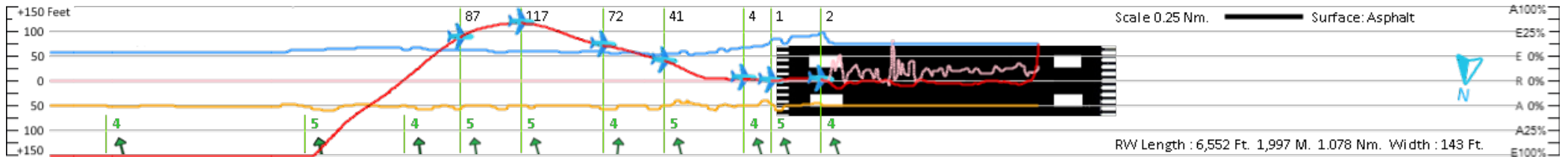
Departed	: 15 : 17	At the Gate	: 16 : 01
ETA at Departure	: 16 : 03	Landed	: 15 : 56
ETE at Departure	: 00 : 46	Flight Duration	: 00 : 39

Overspeed	: No
Stall 1x at	: 3 Ft. AGL - 59 Knt. - VS: 48
Landing Attempts	: 1

# Landing Chart Vertical Path



# Landing Chart Horizontal Path



- Green line : Brakes and Vertical speed in Ft/m, 1000 Ft. line = 0 Ft/m --- 800 Ft. line = -1000 Ft/m
- Black line : Power in percent, 800 Ft. line = 100% --- 600 Ft. line = 0%
- Magenta line : Pitch in degrees, 600 Ft. line = 10° --- 400 Ft. line = 0°
- Red line : Altitude in feet AGL (Runway) & MSL Flight Chart & Deviation Centre Line in feet (horizontal path)
- Blue line : Indicated Air Speed in Knots & Elevator Light blue in % (horizontal path)
- Orange line : Groundspeed in Knots & Aileron in % (horizontal path)
- Pink line : Reverse thrust set & Rudder in % (horizontal path)
- Brown : Terrain height
- Green vertical line (long) : Altitude in feet AGL (Runway)
- Green vertical line (short) : Aiming touchdownpoint or Start of Threshold & end of landing roll (< 25 Knt.)
- Black vertical line (short) : Decision height and idle
- Green V : Autopilot- and Autospeed Hold- OFF
- Magenta V : Autopilot- and Autospeed Hold- ON

## Flight Chart

- Dark Thrust line : Auto Speed on
- Dark Blue IAS line : Overspeed
- Dark Red Altitude line : Auto Pilot On
- Blue Wind line : 0 to 40 Knots
- Green G-Force line : 1 to 3 G
- Blue AOA line : 1 to 10, Red is Stall
- Bank & Rudder line : 0° to 45°, 0 to Maximum, Rudder Dark: GearUp
- Flap & Spoiler line : 0° to 40°, 0 to Fully Deployed, Green Armed
- Pink Color Areas : Above Speed Limit, ONH false Above FL 180
- Magenta Temperature line : Outside temperature in C°
- Blue Visibility line : More then 6 Nm. Light Blue: Less then 6 Nm.
- Pink Arrow : Course arrow up = North
- Black Arrow : Wind
- Green Arrow : Wind arrow to left = Head



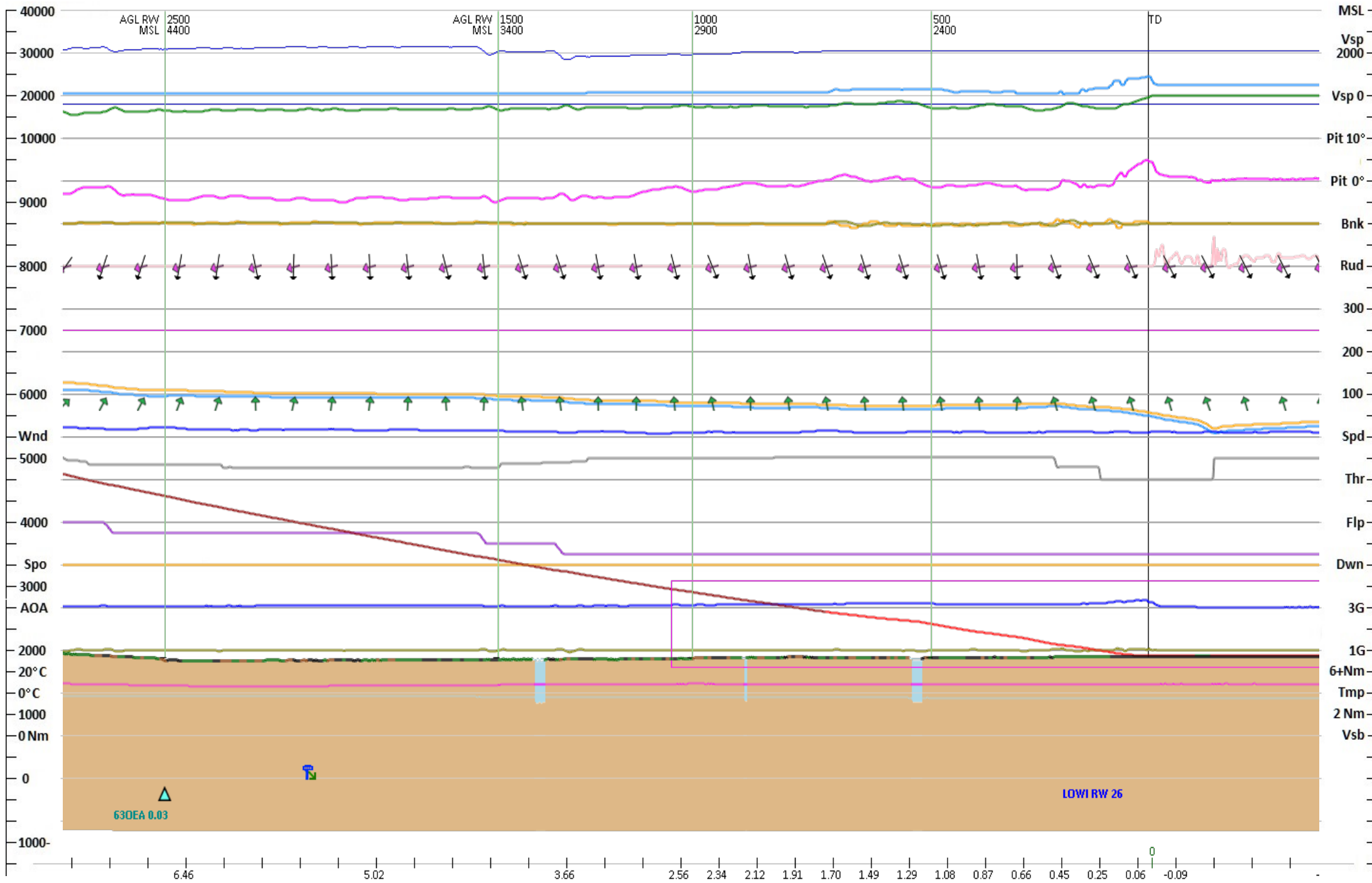
Aircraft : Cessna Skyhawk G1000 Asobo Green  
 Airport Departure : LOWZ - Zell Am See, Zell Am See, Austria - Elevation: 2,469 Ft. 11°C 51°F  
 Airport Destination : LOWI - Innsbruck, Innsbruck, Austria - Elevation: 1,900 Ft. 8°C 46°F  
 RW Id, Length and Elevation : 26 - Heading 259° - 6,552 Ft. 1,997 M. 1,893 Ft. 577 M. (TouchDown Zone)  
 Glideslope : 3.80° - ILS Freq: 111.10 - ILS Id: OEV

Vertical Speed at Touchdown : -96 Ft/m 2 Ft. off CenterLine  
 Pitch at Touchdown : 5.1° G-Force: 1.09  
 Speed at Landing : 49 Knt. 93 Km. IAS - 58 Knt. 107 Km. GSP  
 Nose Down at : 54 Knt. GS & 1.86 Seconds, 52 M. 171 Ft. 0.028 Nm. after Main Gear  
 Bouncing : Not Bounced  
 Landing Roll : 373 M. 1,224 Ft. 16 ft. off CenterLine 16.5 s.  
 ONH at Reaching Cruise ALT : Incorrect, ATIS: 1007 - Kollsman: 1013 (inHg: 29.74 / 29.91)  
 ONH at Touchdown : Incorrect, ATIS: 1010 - Kollsman: 1007 (inHg: 29.82 / 29.74)  
 Landing Attempts : 1 Touch&Go: 0 Go Around/Missed Approach: 0  
 Minimal Visibility at 500 Ft. : 6.56 Km. 3.54 Nm. Temperature: 8°C 46°F  
 Estimated Flown Distance : 122 Km. 66 Nm. - Distance in Flightplan: 110 Km. - 59 Nm.  
 Total Fuel Consumption : 5 Gal. - 19 Liter - 33 Lbs - 15 Kilo  
 Maximum IAS Below 10,000 Ft. : 114 Knt. - Maximum GSP Reached: 130 Knt. - 241 Km.

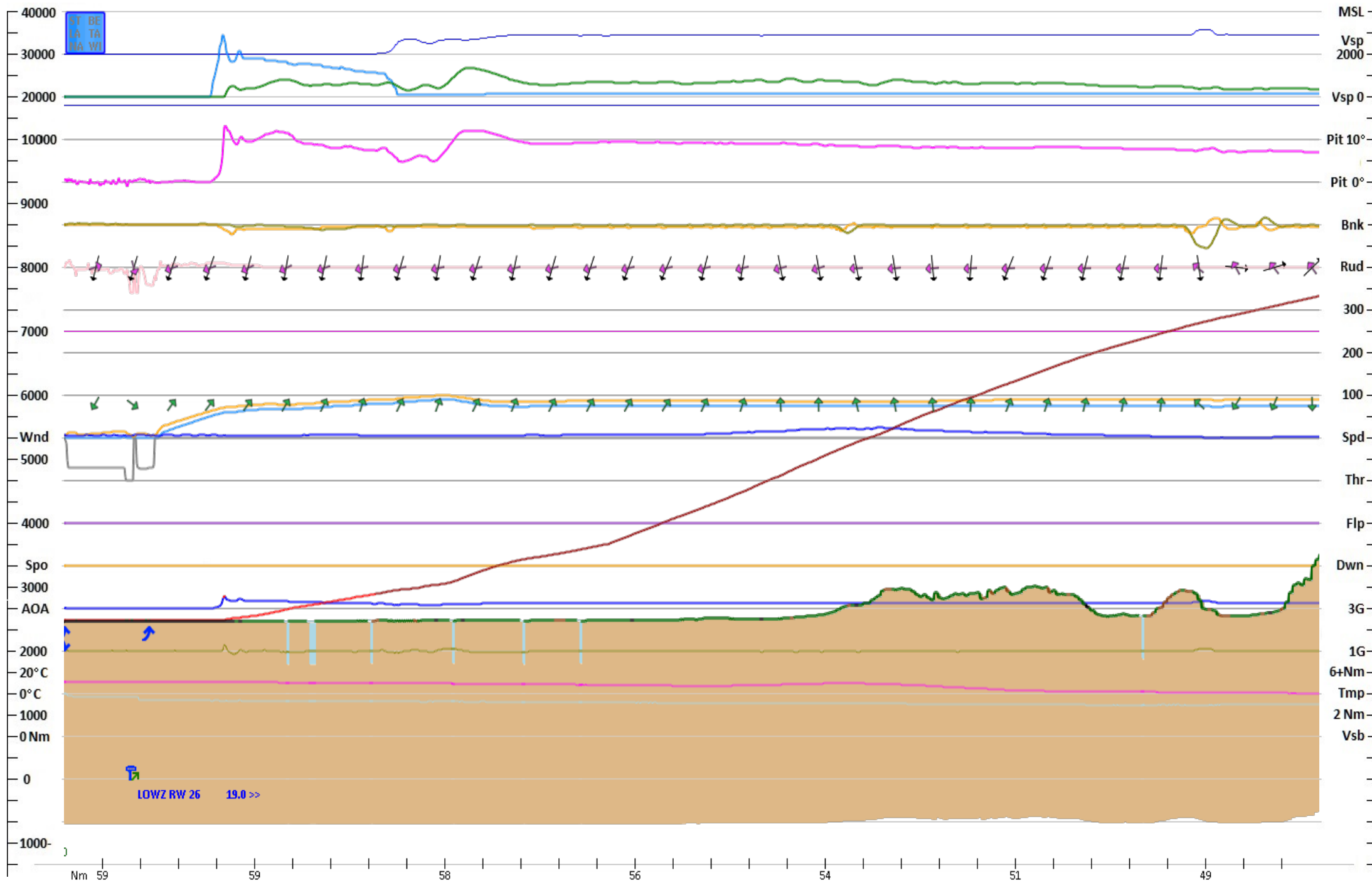
## Failure Occurrences

Fuel leak : NO  
 Gear : NO  
 Flaps : NO  
 Engine Nr : NO  
 Heading : NO  
 Altimeter : NO  
 Vertical speed : NO  
 Attitude : NO  
 Airspeed : NO  
 Pitot : NO

# Approach Chart



# TakeOff Chart



# Full Flight Chart

